

Light Measurement Report

Print date: 2-9-2025

Measurement date and time: 2-9-2025 08:43:19 – Measurement no. VFR-250902-2866-MS

Measurement tracking No. and Link: [VT250902-004160](#)

Operator:



Laboratory and Equipment

Laboratory Owner and Location
Goniospectrometer System and Type
Sensor Name, Calibr. Date and Serial No.
Spectrometer Manufacturer and Model

Viso Systems, Copenhagen V, Denmark
LabSpion – Type C, horizontal
LabSensor Model2 – 11-1-2024 – 3130191315
Ibsen Photonics, Denmark – Freedom VIS (Custom Viso)

Measurement Conditions

Number of C-planes and Resolution
 γ (gamma)-Resolution
Test Distance
Input Power, Power and Displ. Factors
Input RMS Voltage and Current
Frequency of Input Power
Warm-up Time and Variation

12 planes – 30°
5°
12,10 m
77,4 W – PF 0,98 – DPF 0,98
230 V – 0,342 A
50 Hz
Lamp stabilized in 15 min 1 sec – 2,0%

Tested Light Source

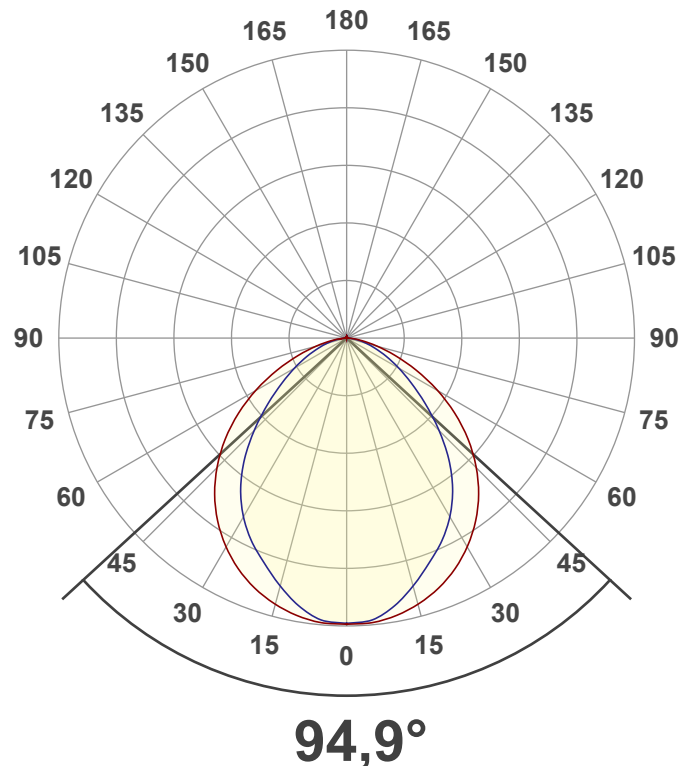
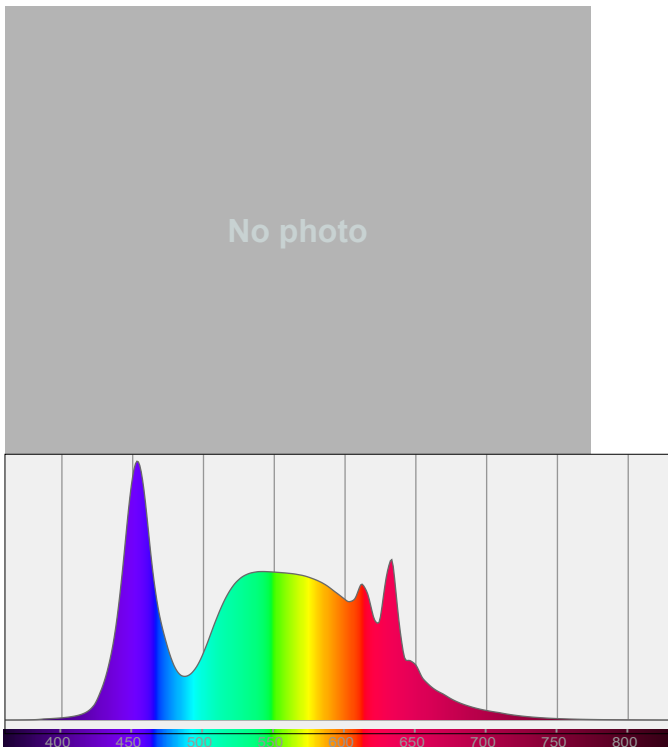
Product Name
Item No. and Manufacturer
Product Description (line 1)

813758-5700K
813758-5700K – Dutchfulfillment
LICHTLIJN MODULE | JUPITER | 65-80W | 90° | 5700K

Main Light Measurement Results

Output – Total Lumen (Up% / Down%)
Efficiency
Peak Intensity and Beam Angle
Correlated Color Temperature, Target/Measured
Color Rendering Index
Color Rendering TM30-18
Color Shift, CIE duv and MacAdam Steps
Flicker

12613 lm – 0,97% / 99,03%
163 lm/W
5606 cd – 94,9°
CCT = 5700 K / 5523 K
CRI 82,6
 R_f 81,8 – R_g 96,9
Duv 0,0027 – SDCM 4,4
SVM 0,01 – PstLM 0,01



Light Measurement Report

Print date: 2-9-2025

Measurement date and time: 2-9-2025 08:43:19 – Measurement no. VFR-250902-2866-MS

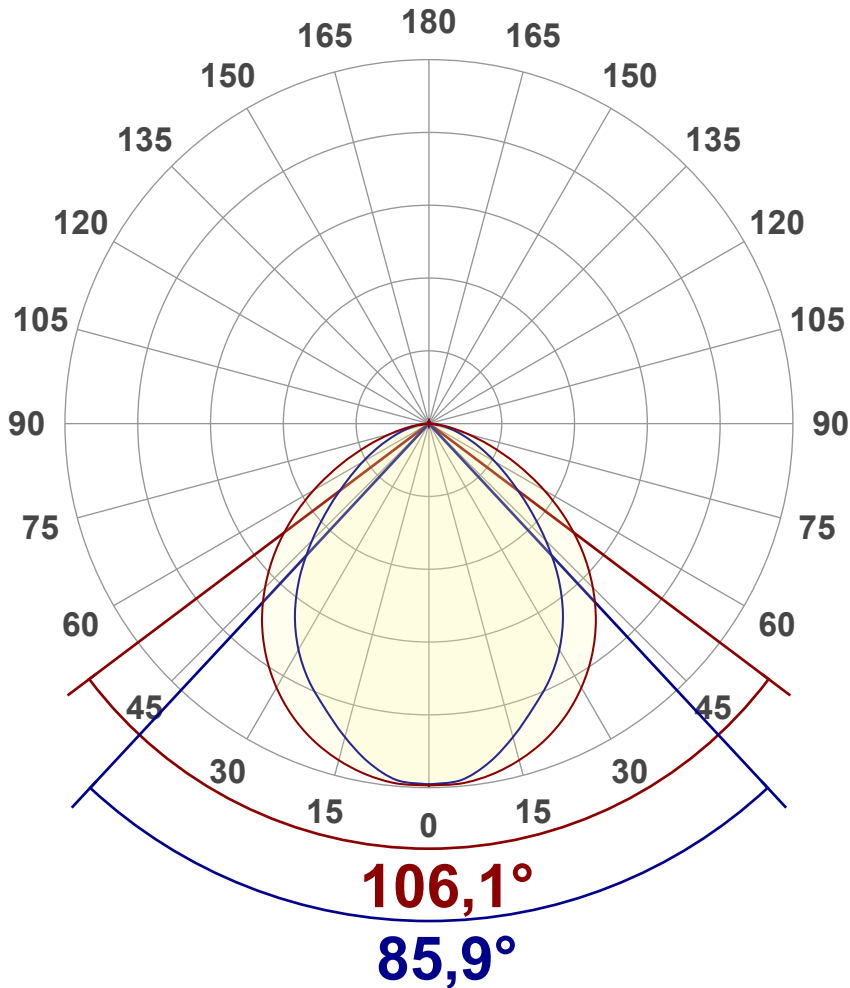
Measurement tracking No. and Link: [VT250902-004160](#)

Operator:



Luminous Intensity diagram

Unit: 0-100% of peak intensity



Main Values

Output (total Lumen)	12613 lm
Lumen Up% / Down%	0,97% / 99,03%
Peak Intensity	5606 cd
Beam Angle (50%)	94,9°
Beam Angle (90%)	85,9°
Beam Angle (10%)	106,1°

Cut-off Angle

Average 2,5%	168,1°
--------------	--------

Field Angle

Average 10%	146,8°
-------------	--------

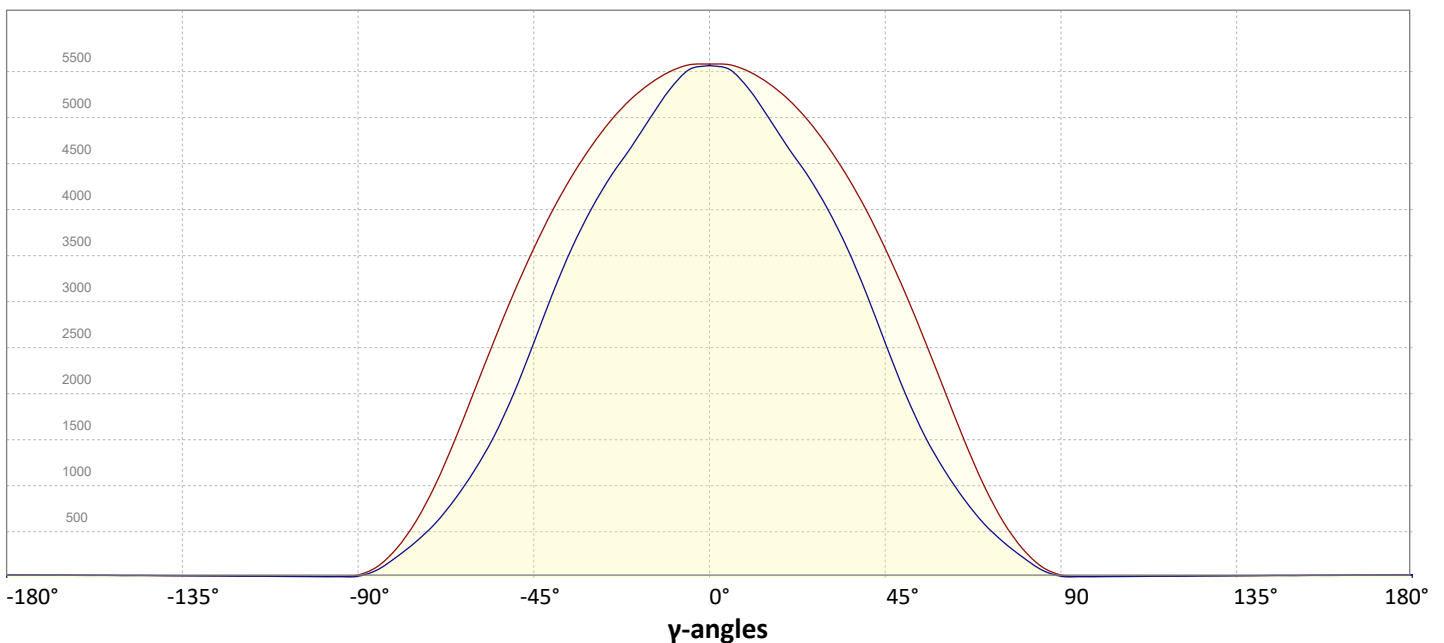
Intensity Ratio

In 120° cone	84,8%
In 90° cone	61,7%

C000-C180

C090-C270

Linear distribution diagram - Intensity (candela) vs γ -angle



Light Measurement Report

Print date: 2-9-2025

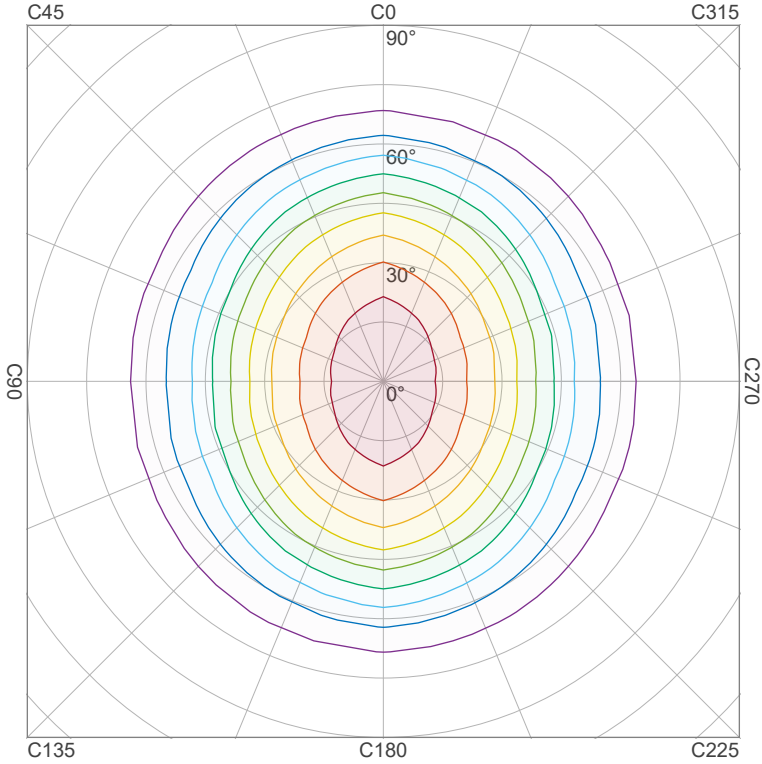
Measurement date and time: 2-9-2025 08:43:19 – Measurement no. VFR-250902-2866-MS

Measurement tracking No. and Link: [VT250902-004160](https://www.viso-systems.com/VT250902-004160)

Operator:



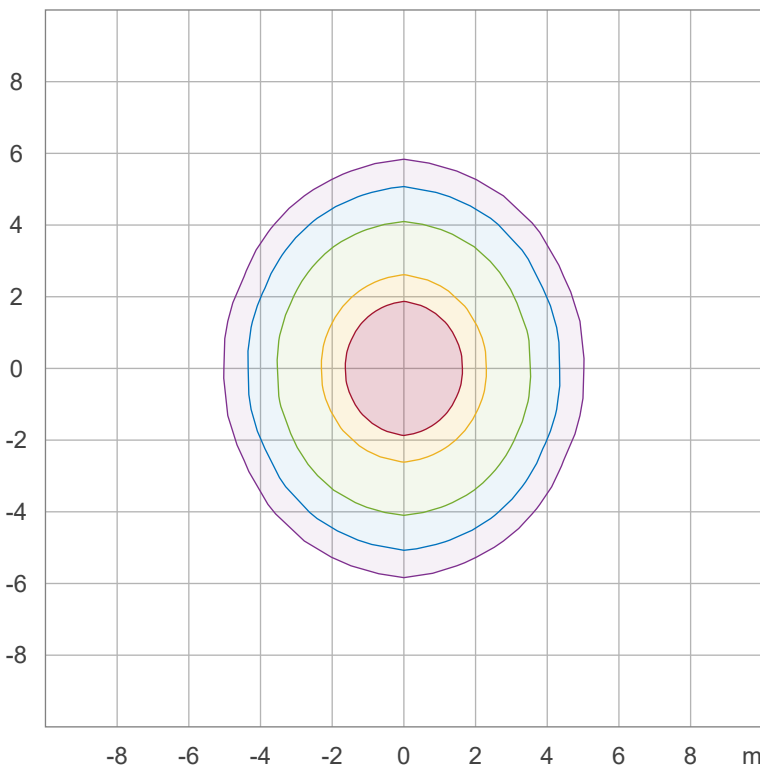
Iso-intensity Diagram (Iso-candela)



90 %	5034,9 cd
80 %	4475,5 cd
70 %	3916,1 cd
60 %	3356,6 cd
50 %	2797,2 cd
40 %	2237,8 cd
30 %	1678,3 cd
20 %	1118,9 cd
10 %	559,4 cd

Peak intensity: 5594,4 cd
Number of c-planes: 12

Iso-illuminance Diagram (Iso-lux)



50,0 %	310,7 lx
30,0 %	186,4 lx
10,0 %	62,1 lx
5,0 %	31,1 lx
3,0 %	18,6 lx

Peak illuminance: 621,3 lx
Mounting height: 3,0 m
Number of c-planes: 12

Light Measurement Report

Print date: 2-9-2025

Measurement date and time: 2-9-2025 08:43:19 – Measurement no. VFR-250902-2866-MS

Measurement tracking No. and Link: [VT250902-004160](#)

Operator:

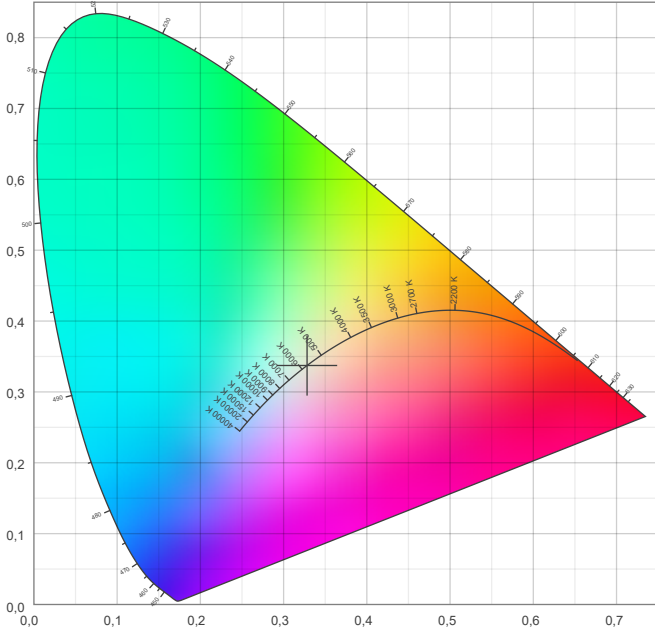


Color details

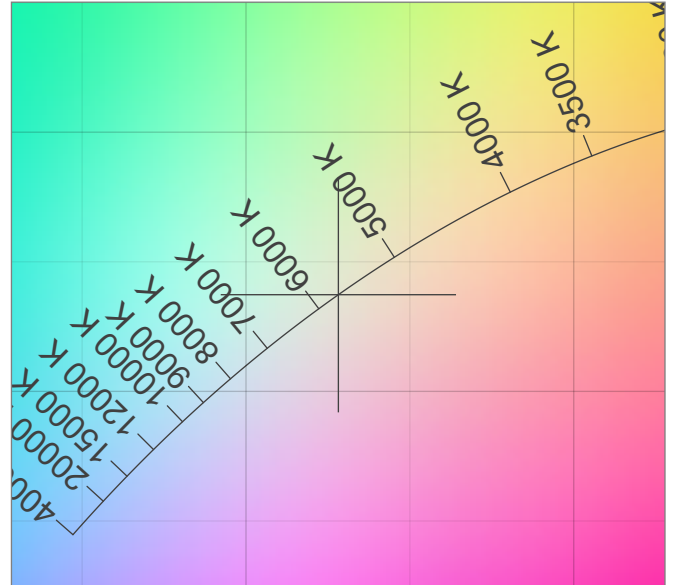
Correlated Color Temperature, Target CCT = 5700 K
 Correlated Color Temperature, Measured CCT = 5523 K
 Color Rendering Index CRI 82,6
 Color Rendering Index, R9 (red component) R9 = 25,2
 Color Rendering TM30-18 R_f 81,8 – R_g 96,9
 Color Quality Scale CQS = 79,9

MacAdam Steps SDCM = 4,4
 Color coordinates CIE 1931 (x;y) = (0,328;0,337)
 Color coordinate CIEs 1960 (u;v) = (0,205;0,317)
 Color deviation from BBL Duv = 0,0027
 Color coordinate CIEs 1976 (CIELUV) (u';v') = (0,205;0,475)

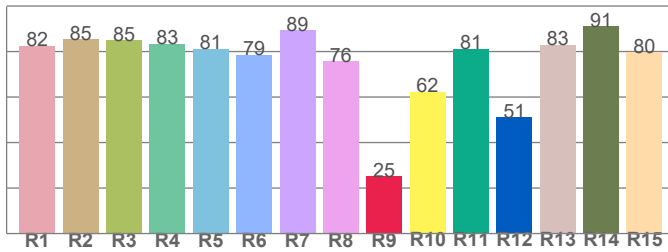
CIE 1931



CIE 1931 – zoomed on Planckian locus



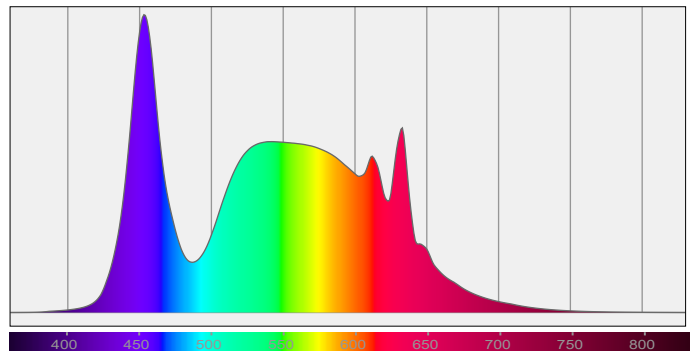
Color Rendering Index per reference color (CIE 1995)



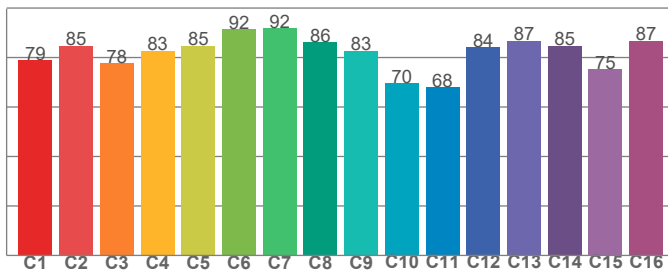
CRI R values, only R1-R8 are used to calculate final CRI value

R1	R2	R3	R4	R5	R6	R7	R8	R9	R10	R11	R12	R13	R14	R15
82,5	85,3	84,8	83,5	81,2	78,6	89,3	75,7	25,2	62,4	81,2	51,0	82,9	91,1	79,6

Spectral power distribution (SPD) / W/nm – 0-100%



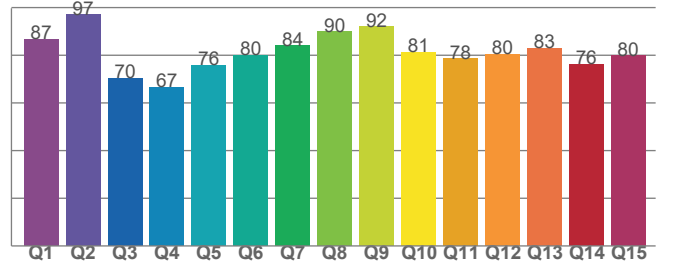
TM30-18 R_f-values per hue bin



TM30 C values, 16 binned values out of total of 99 C values

C1	C2	C3	C4	C5	C6	C7	C8	C9	C10	C11	C12	C13	C14	C15	C16
78,9	84,7	77,6	82,7	84,8	91,5	91,9	86,0	82,7	69,6	68,0	84,1	86,8	84,7	75,3	86,8

Color Quality Scale by reference color



CQS Q values

Q1	Q2	Q3	Q4	Q5	Q6	Q7	Q8	Q9	Q10	Q11	Q12	Q13	Q14	Q15
86,6	97,0	70,4	66,5	75,8	80,0	83,9	89,9	91,9	81,2	78,5	80,4	83,0	76,2	79,8

Light Measurement Report

Print date: 2-9-2025

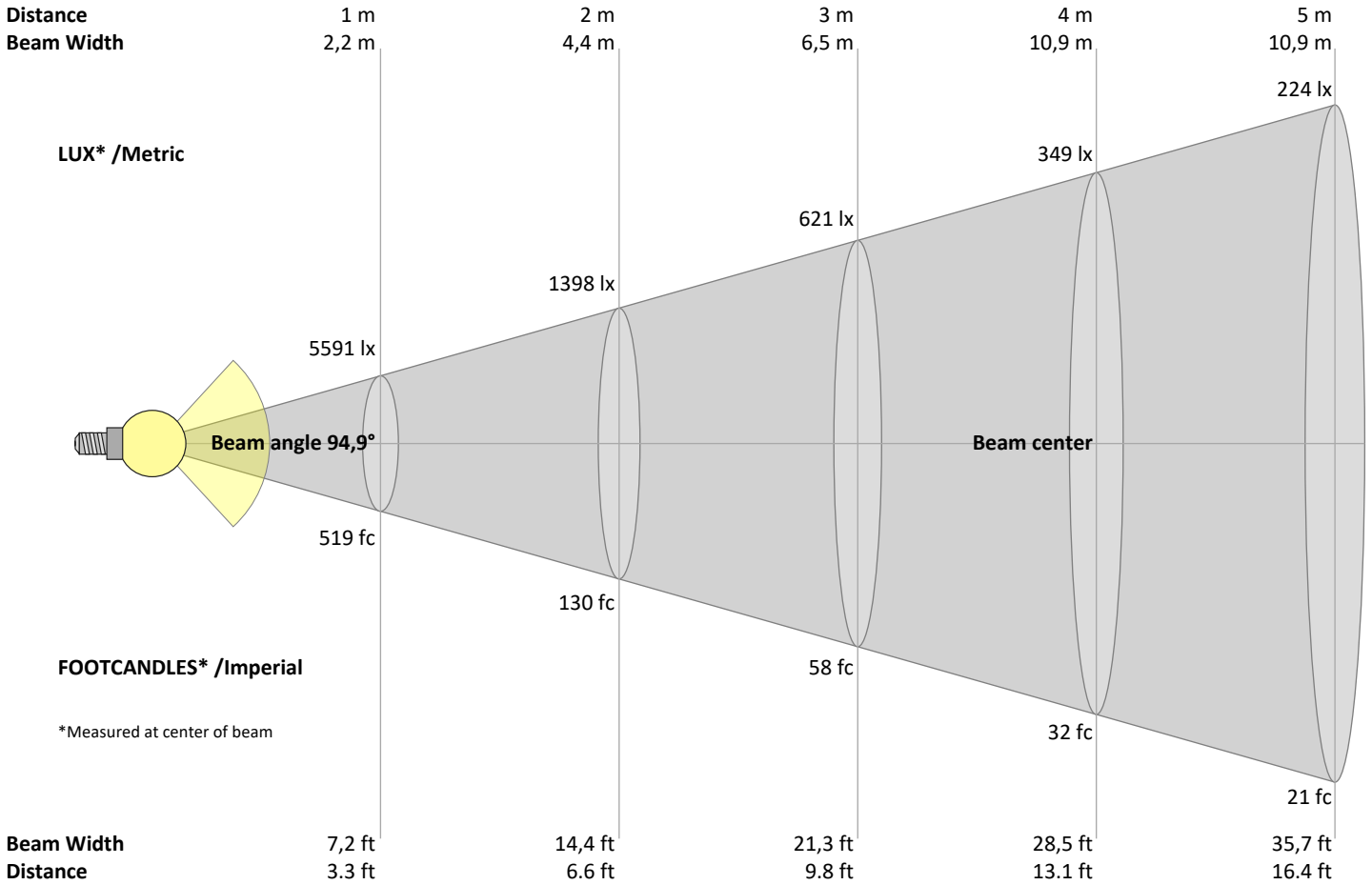
Measurement date and time: 2-9-2025 08:43:19 – Measurement no. VFR-250902-2866-MS

Measurement tracking No. and Link: [VT250902-004160](https://www.viso-systems.com/VT250902-004160)

Operator:



Beam Details



Beam intensities from 1 – 20 m

1	2	3	4	5	6	7	8	9	10	11	12	13	14	15	16	17	18	19	20	m
3,3	6,6	9,8	13,1	16,4	19,7	23	26,2	29,5	32,8	36,1	39,4	42,7	45,9	49,2	52,5	55,8	59,1	62,3	65,6	ft
5591	1398	621	349	224	155	114	87	69	56	46	39	33	29	25	22	19	17	15	14	lux
519,4	129,8	57,7	32,5	20,8	14,4	10,6	8,1	6,4	5,2	4,3	3,6	3,1	2,6	2,3	2	1,8	1,6	1,4	1,3	fc

Intensities in 0° c-plane

0°	5°	10°	15°	20°	25°	30°	35°	40°	45°	50°	55°	60°	65°	70°	75°	80°	85°	90°	95°	γ
5591	5574	5501	5375	5204	4980	4703	4379	4005	3576	3104	2590	2054	1519	1030	627	326	125	32	16	cd
100%	100%	98%	96%	93%	89%	84%	78%	72%	64%	56%	46%	37%	27%	18%	11%	6%	2%	1%	0%	of 0°val

Intensities in 90° c-plane

0°	5°	10°	15°	20°	25°	30°	35°	40°	45°	50°	55°	60°	65°	70°	75°	80°	85°	90°	95°	γ
5591	5523	5312	5007	4682	4379	4025	3604	3105	2551	2016	1553	1180	866	602	398	230	88	18	12	cd
100%	99%	95%	90%	84%	78%	72%	64%	56%	46%	36%	28%	21%	15%	11%	7%	4%	2%	0%	0%	of 0°val

Intensities in 180° c-plane

0°	5°	10°	15°	20°	25°	30°	35°	40°	45°	50°	55°	60°	65°	70°	75°	80°	85°	90°	95°	γ
5591	5574	5501	5375	5204	4980	4703	4379	4005	3576	3104	2590	2054	1519	1030	627	326	125	32	16	cd
100%	100%	98%	96%	93%	89%	84%	78%	72%	64%	56%	46%	37%	27%	18%	11%	6%	2%	1%	0%	of 0°val

Intensities in 270° c-plane

0°	5°	10°	15°	20°	25°	30°	35°	40°	45°	50°	55°	60°	65°	70°	75°	80°	85°	90°	95°	γ
5591	5523	5312	5007	4682	4379	4025	3604	3105	2551	2016	1553	1180	866	602	398	230	88	18	12	cd
100%	99%	95%	90%	84%	78%	72%	64%	56%	46%	36%	28%	21%	15%	11%	7%	4%	2%	0%	0%	of 0°val

Light Measurement Report

Print date: 2-9-2025

Measurement date and time: 2-9-2025 08:43:19 – Measurement no. VFR-250902-2866-MS

Measurement tracking No. and Link: [VT250902-004160](#)

Operator:



Light Planning – UGR table

Uncorrected, comprehensive UGR table according to 117-1995

Reflectances		70	70	50	50	30	70	70	50	50	30
	ρ Ceiling	70	70	50	50	30	70	70	50	50	30
	ρ Walls	50	30	50	30	30	50	30	50	30	30
	ρ Floor	20	20	20	20	20	20	20	20	20	20
Room size		Viewed Crosswise					Viewed Endwise				
H = mounting height above eye level		(Viewing direction orthogonal to lamp length axis)					(Viewing direction parallel to lamp length axis)				
X	Y										
2H	2H	27,2	28,3	27,4	28,6	28,9	25,5	26,6	25,7	26,9	27,1
	3H	28,1	29,2	28,5	29,5	29,7	26,2	27,3	26,6	27,6	27,8
	4H	28,4	29,5	28,8	29,8	30,0	26,5	27,6	26,9	27,9	28,1
	6H	28,6	29,6	28,9	29,9	30,2	26,8	27,7	27,1	28,0	28,4
	8H	28,6	29,5	29,0	29,9	30,3	26,8	27,7	27,2	28,1	28,5
	12H	28,6	29,5	29,0	29,8	30,3	26,8	27,7	27,2	28,1	28,5
4H	2H	27,4	28,5	27,8	28,8	29,0	26,0	27,1	26,4	27,3	27,6
	3H	28,6	29,5	28,9	29,8	30,3	26,9	27,8	27,3	28,2	28,6
	4H	28,9	29,7	29,3	30,1	30,7	27,2	28,1	27,7	28,5	29,0
	6H	29,1	29,9	29,6	30,3	30,7	27,5	28,3	28,0	28,7	29,1
	8H	29,2	29,9	29,7	30,3	30,7	27,6	28,3	28,1	28,7	29,1
	12H	29,2	29,8	29,7	30,2	30,7	27,6	28,2	28,2	28,7	29,2
8H	4H	28,9	29,7	29,5	30,0	30,4	27,4	28,1	27,9	28,5	28,9
	6H	29,3	29,8	29,8	30,3	30,8	27,8	28,3	28,3	28,8	29,4
	8H	29,4	29,8	29,9	30,4	31,0	27,9	28,4	28,5	28,9	29,6
	12H	29,4	29,8	30,0	30,3	30,9	28,0	28,4	28,6	28,9	29,5
12H	4H	28,9	29,5	29,4	29,9	30,4	27,4	28,0	27,9	28,4	28,9
	6H	29,3	29,7	29,8	30,3	30,9	27,8	28,3	28,4	28,8	29,5
	8H	29,4	29,8	30,0	30,3	30,9	28,0	28,4	28,6	28,9	29,5

Variations with the observer position for the luminaire spacings, S:

S = 1.0H	0,1 / -0,2	0,2 / -0,3
S = 1.5H	0,5 / -0,7	0,5 / -0,8
S = 2.0H	1,2 / -1,5	1,0 / -1,5

Coefficients of Utilization

Ceiling reflectance	80			70			50			30			10			0		
Wall reflectance	70	50	30	10	70	50	30	10	50	30	10	50	30	10	50	30	10	0
Floor reflectance	20	20	20	20	20	20	20	20	20	20	20	20	20	20	20	20	20	0
RCR	(RCR: Room Cavity Ratio)																	
	Room Values are expressed as percentage of Lumen delivered to the task surface																	
0	119	119	119	119	116	116	116	116	111	111	106	106	106	101	101	101	99	
1	110	105	102	98	107	103	100	97	99	96	93	95	92	90	91	89	87	85
2	101	93	87	82	98	91	86	81	88	83	79	84	80	77	81	78	75	73
3	93	83	75	69	90	81	74	69	78	72	67	75	70	66	73	69	65	63
4	85	74	66	60	83	73	65	59	70	64	58	68	62	57	66	61	57	55
5	79	67	58	52	77	66	58	52	63	56	51	61	55	50	59	54	50	48
6	73	60	52	46	71	59	51	46	58	50	45	56	50	45	54	49	44	42
7	68	55	47	41	66	54	46	41	53	46	40	51	45	40	50	44	40	38
8	63	50	42	37	62	50	42	37	48	41	36	47	41	36	46	40	36	34
9	59	46	39	33	58	46	38	33	45	38	33	43	37	33	42	37	32	31
10	56	43	35	30	54	42	35	30	41	35	30	40	34	30	39	34	30	28

Light Measurement Report

Print date: 2-9-2025

Measurement date and time: 2-9-2025 08:43:19 – Measurement no. VFR-250902-2866-MS

Measurement tracking No. and Link: [VT250902-004160](#)

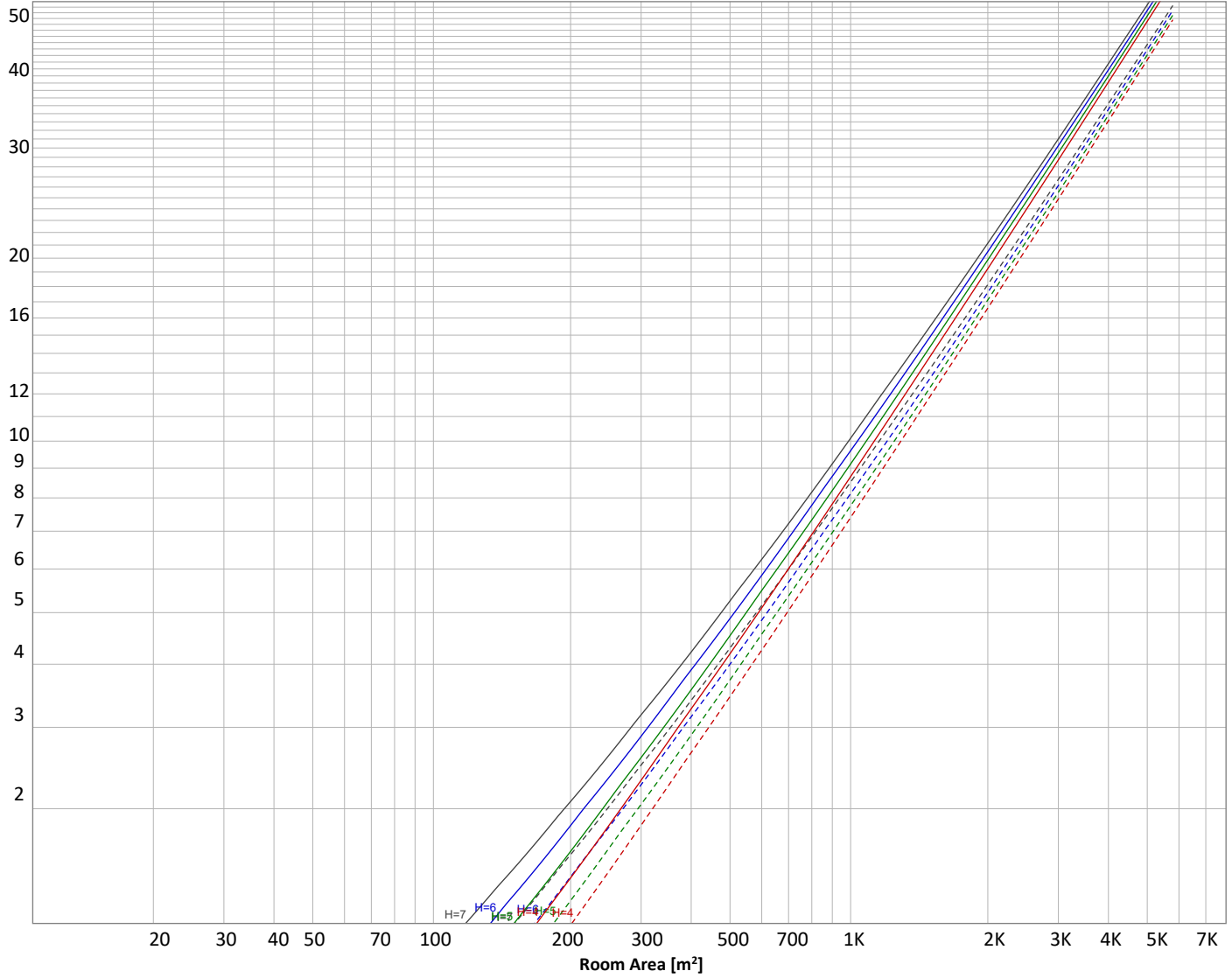
Operator:



Luminaire budgetary diagram

Uncorrected, comprehensive UGR table according to 117-1995

LAMPS (number of lamps)



Conditions

H = Room height	Flux = 12613 lm				
H _{down} = Lamp distance from ceiling =	0.00 m	Line type	Ceiling reflectance	ρ(%) Wall reflectance	Floor reflectance
H _{work} = Work area height from floor =	0.00 m	-----	70	50	30
E _{work} = Average lux on work area =	100 lx	—————	50	30	20

Zonal Lumen Summary

0°-10°	10°-20°	20°-30°	30°-40°	40°-50°	50°-60°	60°-70°	70°-80°	80°-90°
525 lm	1460 lm	2132 lm	2453 lm	2329 lm	1803 lm	1125 lm	529 lm	135 lm
90°-100°	100°-110°	110°-120°	120°-130°	130°-140°	140°-150°	150°-160°	160°-170°	170°-180°
17,0 lm	16,1 lm	17,3 lm	17,4 lm	16,8 lm	15,2 lm	12,0 lm	7,85 lm	2,76 lm

Light Measurement Report

Print date: 2-9-2025

Measurement date and time: 2-9-2025 08:43:19 – Measurement no. VFR-250902-2866-MS

Measurement tracking No. and Link: [VT250902-004160](#)

Operator:



Outdoor Light Planning

Lumen per Zone

Zone (γ)	Lumen	% Total
0-10°	525 lm	4,2%
10-20°	1460 lm	11,6%
20-30°	2132 lm	16,9%
30-40°	2453 lm	19,4%
40-50°	2329 lm	18,5%
50-60°	1803 lm	14,3%
60-70°	1125 lm	8,9%
70-80°	529 lm	4,2%
80-90°	135 lm	1,1%
90-100°	17 lm	0,1%
100-110°	16 lm	0,1%
110-120°	17 lm	0,1%
120-130°	17 lm	0,1%
130-140°	17 lm	0,1%
140-150°	15 lm	0,1%
150-160°	12 lm	0,1%
160-170°	8 lm	0,1%
170-180°	3 lm	0,0%
Total	12613 lm	100,0%

Intensity peaks

Max intensity	5606 cd
Intensity, 90°	32 cd
Intensity, 0°	5591 cd

Zonal Lumen summary

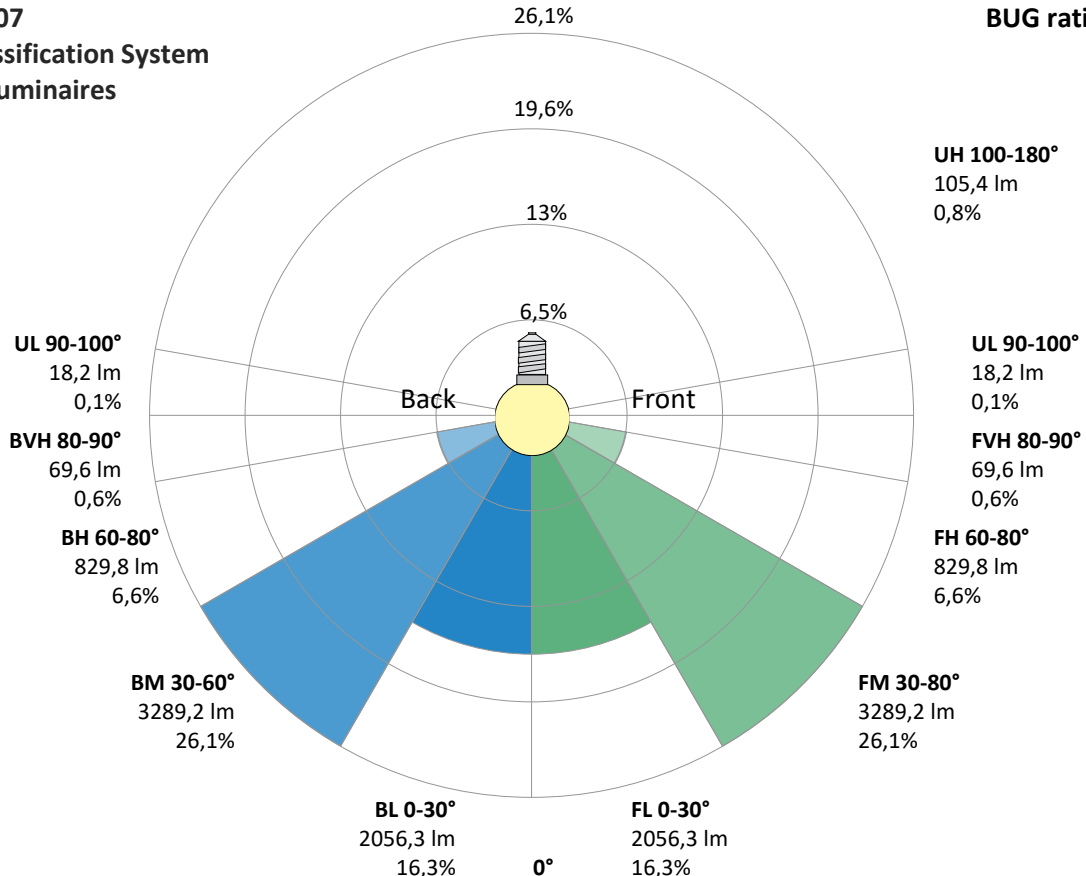
Zone (γ)	Lumen	% Total
0-30°	4117 lm	32,6%
0-40°	6569 lm	52,1%
0-60°	10701 lm	84,8%
60-90°	1790 lm	14,2%
70-100°	682 lm	5,4%
90-120°	50 lm	0,4%
0-90°	12491 lm	99,0%
90-180°	122 lm	1,0%
0-180°	12613 lm	100,0%

BUG rating

	Lumen	% Total
Forward light		
Low(0-30°)	2056 lm	16,3%
Medium(30-60°)	3289 lm	26,1%
High(60-80°)	830 lm	6,6%
Very high(80-90°)	70 lm	0,6%
Back light		
Low(0-30°)	2056 lm	16,3%
Medium(30-60°)	3289 lm	26,1%
High(60-80°)	830 lm	6,6%
Very high(80-90°)	70 lm	0,6%
Uplight		
Low(90-100°)	18 lm	0,1%
High(100-180°)	105 lm	0,8%

IESNA TM-15-07 Luminaire Classification System For Outdoor Luminaires

BUG rating B3 U3 G1



Light Measurement Report

Print date: 2-9-2025

Measurement date and time: 2-9-2025 08:43:19 – Measurement no. VFR-250902-2866-MS

Measurement tracking No. and Link: [VT250902-004160](#)

Operator:

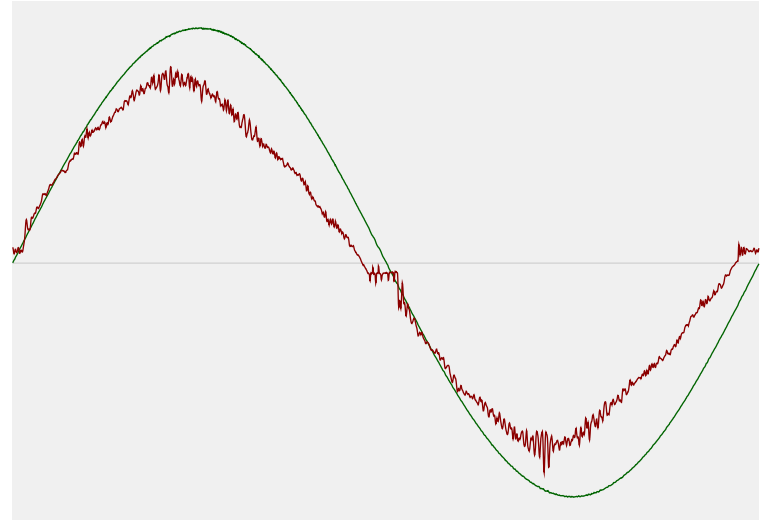


Power Details

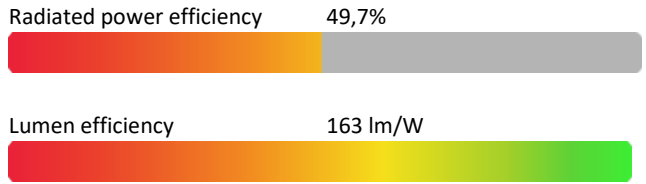
Input Power

Power feed to light source	77,4 W
Frequency of input power	50 Hz
RMS Input voltage feed, V_{RMS}	230 V
RMS Input current feed, I_{RMS}	0,342 A
Volt-Ampere or apparent power = $V_{RMS} * I_{RMS}$	78,76 VA
Displacement factor of AC power feed	0,98
Power factor of AC current feed	0,98
Total harmonic distortion of the current	7,35%
Total harmonic distortion of the voltage	0,08%

Input Power Curve



Efficiency



Stabilization Details

Warmup Conditions

Stable period	15 min
Stable change max	2,0%
Minimum time	15 min

Color Temperature Change

CCT start	5696 K
CCT shift	+4 K
CCT end	5700 K

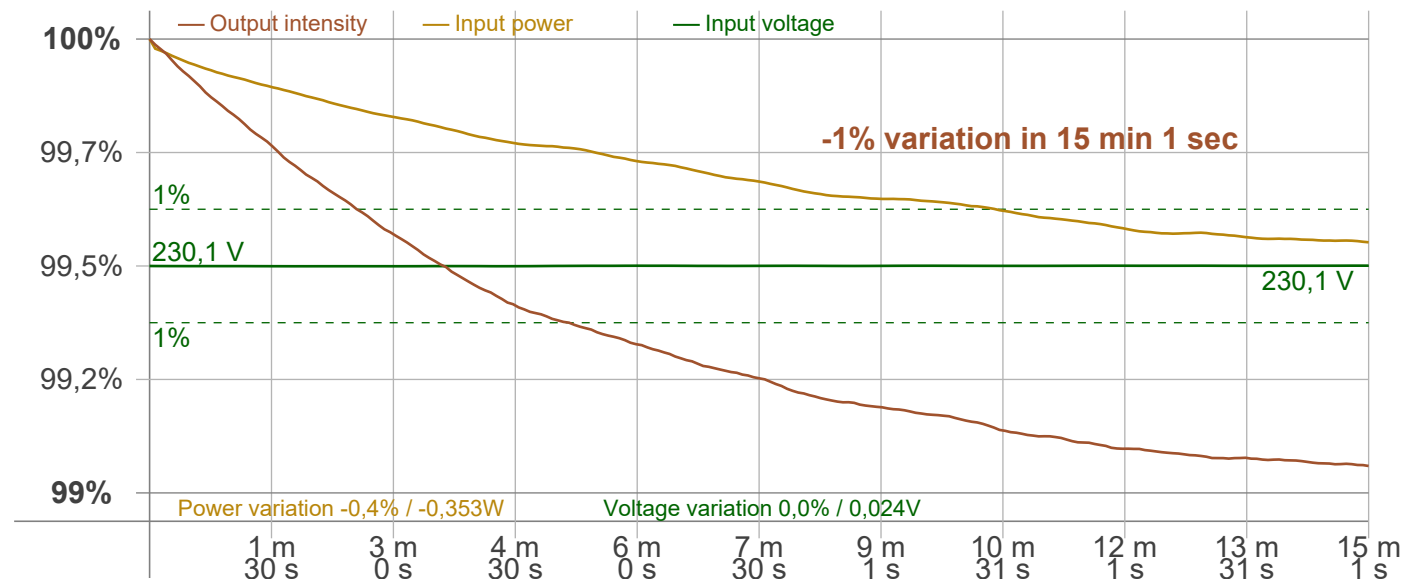
Warmup Result

Total warmup time	Lamp stabilized in 15 min 1 sec
Warmup variation	-1,0%

Output Change

Output start	12738 lm
Output change	-125 lm
Output end	12613 lm

Stabilization Curve



Light Measurement Report

Print date: 2-9-2025

Measurement date and time: 2-9-2025 08:43:19 – Measurement no. VFR-250902-2866-MS

Measurement tracking No. and Link: [VT250902-004160](#)

Operator:



Flicker /TLA details

Flicker Meter Type Viso Systems LabFlicker
 Frequency of input power 50 Hz
 Flicker/TLA sample rate 20000 samples/s

Measurement time
 PstLM 180 sec
 All other indices 1,2 sec

Flicker indices according to Illuminating Engineering Society (IES)

Flicker frequency 100 Hz
 Percent Flicker 0,3 %
 Flicker index 0

Flicker indices according to California Energy Commission (CEC) 2016b

JA8/10 40 Hz 0,01 %
 JA8/10 90 Hz 0,02 %
 JA8/10 200 Hz 0,3 %
 JA8/10 400 Hz 0,29 %
 JA8/10 1000 Hz 0,29 %

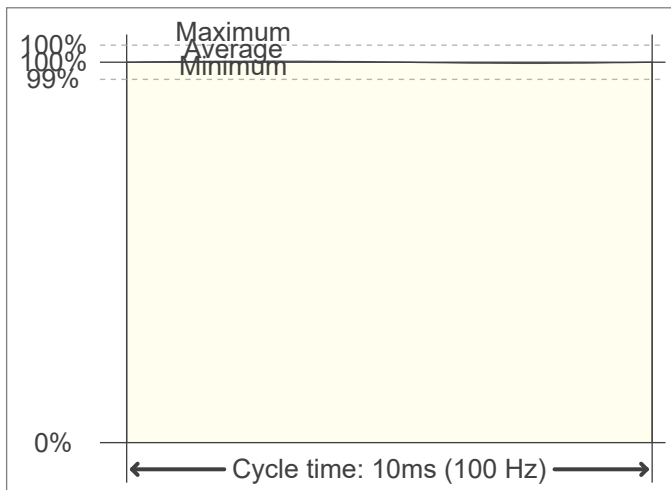
TLA indices (re IEC TR 61547-1, IEC 61000-3-3 and IEC 61000-4-15)

PstLM value (F < 80 Hz) 0,01
 SVM value (80 < F < 2000 Hz) 0,01

Flicker indices according to Lighting Research Center (2015)

Perception metric, Assist Mp 0,01

Flicker frame (frame of one flicker period in time domain)



Flicker FFT (flicker curve in frequency domain)



IEEE 1789 Frequency/modulation plot

